



An ISO Certified Business Organization under the management of Bangladesh Army

BDP LTD IS NOW PRODUCING VARIOUS KINDS OF DIE & MOLD, SPARE PARTS, TOOLS & OTHERS ENGINEERING EQUIPMENT WITH OUR LATEST CNC MACHINES AND QUALIFIED TECHNICAL PERSONNEL



BANGLADESH DIESEL PLANT LIMITED

**WE PRODUCE HIGH QUALITY SPARE PARTS OF VARIOUS
ENGINES, JUTE MILLS, FEED MILLS AND ANY OTHER MECHANICAL PARTS**

Engine Spare Parts



Crank Gear



Crank Shaft



Cam Shaft



Liner

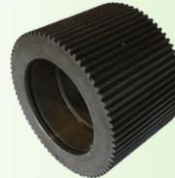
Feed Mill Spare Parts



Driving Shaft



Sprocket, Gear, Share Pin



Roller Shell

Jute Mill Spare Parts



Foller Screw (L/H)



Foller Screw (R/H)



Foller Dog

Printing Press Spare Parts



Jaw Gripper

Others Spare Parts



Ring



Driving Shaft (Big)



Shaft & Gear

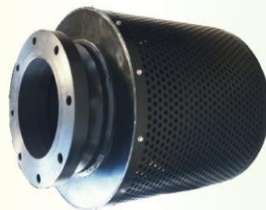


Driving Shaft (Small)

Pipes Manufacture for Irrigation & Dredging



Flange



Foot Valve



Bend

Fabrication of BTS



Concertina Barbed Wire



Model: BTO-22



Model: BTO-10



Model: BTO-18



Concertina Barbed Wire (Blade Type)

Technical Specifications for GI Strip & GI Wire

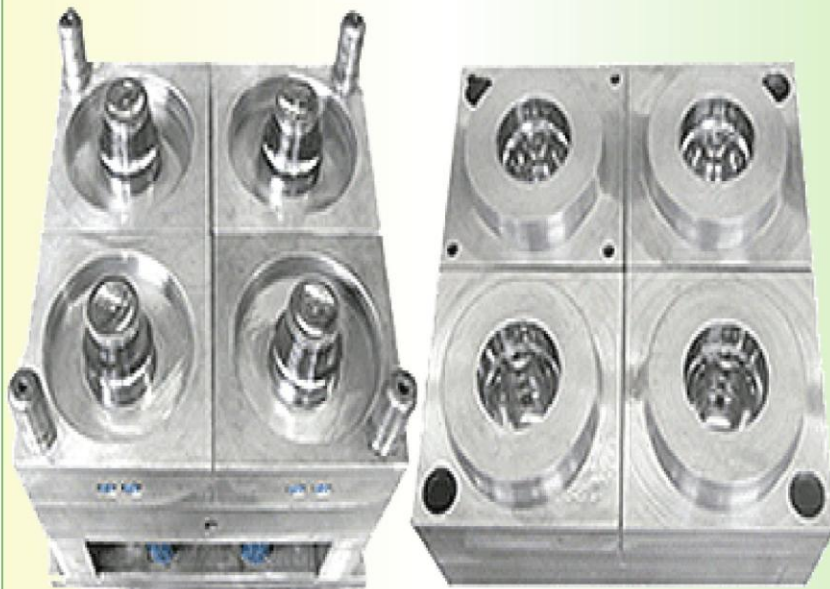
Material to be used : GI wire (Dia 2.5 mm)
GI Sheet (Thickness 0.5 ± 0.05 mm)
Diameter of coil : 600 mm
Turn of each coil : 50 turn (which will cover about 7 meter)
Model : BTO-10/18/22

Technical Specifications for SS Strip & Spring Steel Wire

Material to be used : Spring Steel wire (Dia 2.5 mm)
Stainless steel Sheet
(Thickness 0.5 ± 0.05 mm)
Diameter of coi : 600 mm
Turn of each coil : 50 turn (which will cover about 7 meter)
Model : BTO-10/18/22

Beside our production we can also produce
as per specification given by the customer

Die & Mold for Plastic Products



Plastic Jar

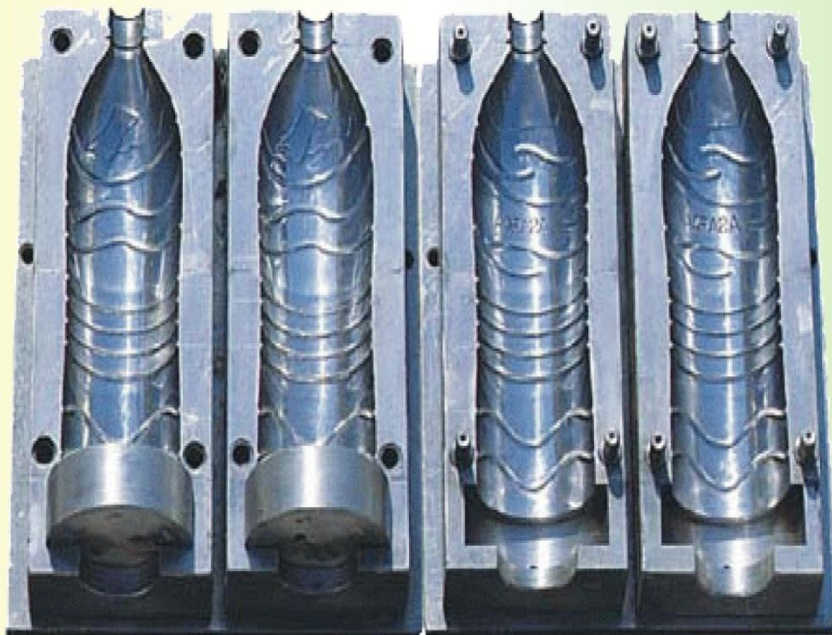


Plastic Container

Die & Mold for Plastic Products



5 Liter Plastic Bottle



2.5 Liter Plastic Bottle

Defense Stores



Different Equipment for REB



REB Line Hardware



Grounding Electrodes

Digital Prepaid Electric Meter

Assembled & Marketed



Diesel Engine

Assembled & Marketed



Motor & Pump

Assembled & Marketed

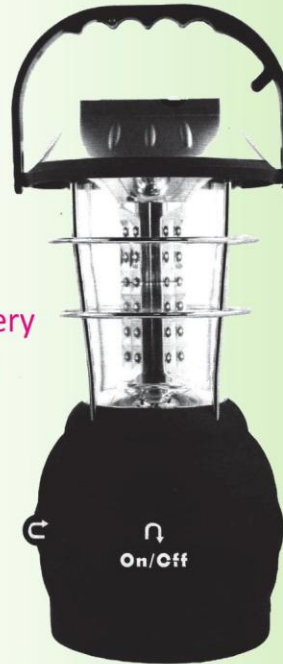


Solar Lantern

Assembled & Marketed

Technical Specification:

- ★ 36 Nos Super LED Light
- ★ Charged by Solar, Electric and Handling System
- ★ Strong 3.7 V, 2000 mAh Li-ion Battery
- ★ Usable up to 6 Hour by Full Charge
- ★ USB Port for Mobile Charging



**SUPER BRIGHT
SOLAR LANTERN**



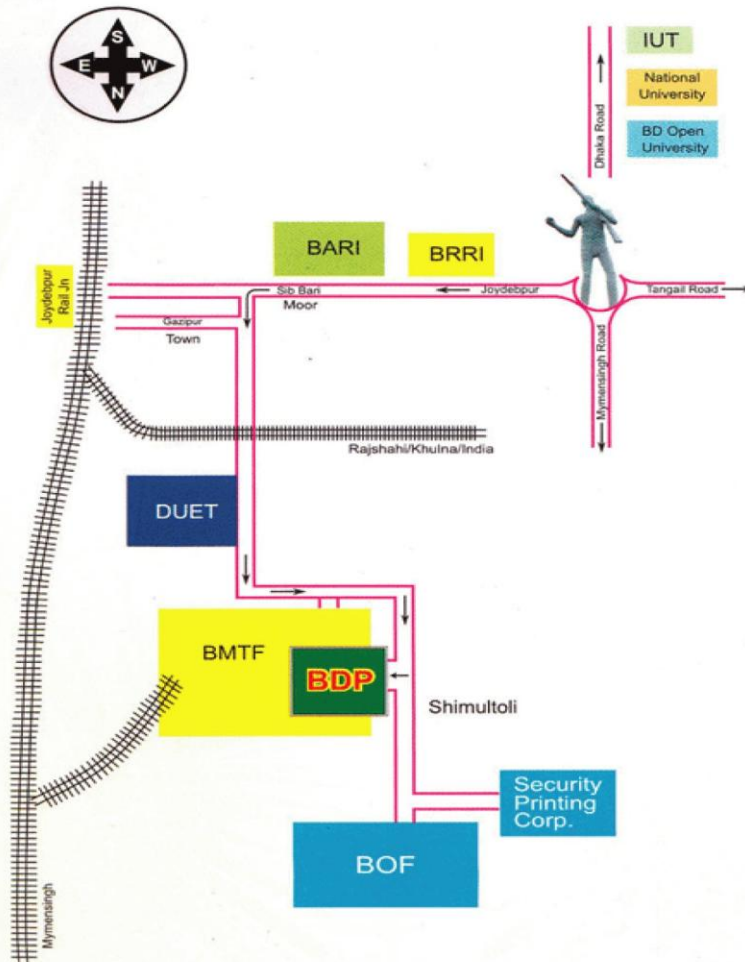
Technical Specification:

- ★ 36 Nos Super LED Light
- ★ Charged by 3 Watt Solar Panel
- ★ Strong 6 V, 8 Ah Maintenance Free Lead Acid Battery
- ★ Usable up to 08 Hour by Full Charge
- ★ Light Volume System

**MULTI-PURPOSE SOLAR
RECHARGEABLE LAMP**

ASSEMBLED BY BDP LTD

BANGLADESH DIESEL PLANT (BDP) LTD LOCATION MAP



Not to Scale



BANGLADESH DIESEL PLANT LIMITED

Factory & Head Office:

Gazipur Cantonment, Shimultoly, Joydebpur
Gazipur-1700. Tel: 02 9205806, Fax: 02 9205800
Email: info@bdp.gov.bd, Web: www.bdp.gov.bd

Corporate Office:

12/A-B, Shahid Badiuzzaman Road, Dhaka
Cantonment. Tel: 02 8711959, Fax: 02 8711959